

E YANMAR ZT350 and ZT370 Stern Drive

B3 Stainless steel 3 blade
Rubber Hub

B	D	P		PART NO.
3	14 3/8	20	Rear	1651-144-20
3	14 3/8	21	Rear	1651-144-21 *
3	14 1/4	22	Rear	1651-143-22
3	14 1/4	23	Rear	1651-143-23 *
3	14	24	Rear	1651-140-24
3	14	25	Rear	1651-140-25 *
3	14	26	Rear	1651-140-26
3	13 3/4	27	Rear	1651-138-27 *
3	13 3/4	28	Rear	1651-138-28
4	16	20	Front	1654-160-20
4	16	21	Front	1654-160-21 *
4	15 3/4	22	Front	1654-158-22
4	15 3/4	23	Front	1654-158-23 *
4	15 1/2	24	Front	1654-155-24
4	15 1/2	25	Front	1654-155-25 *
4	15 1/2	26	Front	1654-155-26
4	15	27	Front	1654-150-27 *
4	15	28	Front	1654-150-28

NEW!



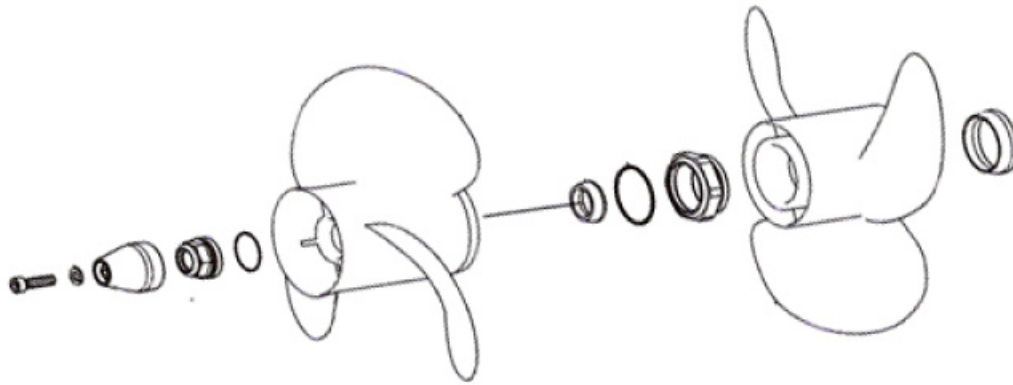
* Coming soon in December 2012.

SOLAS B3
Dual Props



* Check with engine manufacture for complete prop hardware listings. SOLAS does not make all hardware required for all motors made.

E YANMAR ZT350 and ZT370 Stern Drive



Props may require special tools to install. Please consult OEM manual for proper installation and for torque specs. Use Yanmar Propeller hardware only.

● APPLICATION CHART ●

Solas Part #	B	D	P	ROTATION	Front or Rear	Yanmar Part #
1651-144-20	3	14 3/8	20	R	REAR PROP	196350-09400
1651-144-21	3	14 3/8	21	R	REAR PROP	
1651-143-22	3	14 1/4	22	R	REAR PROP	196350-09720
1651-143-23	3	14 1/4	23	R	REAR PROP	
1651-140-24	3	14	24	R	REAR PROP	196350-09740
1651-140-25	3	14	25	R	REAR PROP	
1651-140-26	3	14	26	R	REAR PROP	196350-09760
1651-138-27	3	13 3/4	27	R	REAR PROP	
1651-138-28	3	13 3/4	28	R	REAR PROP	196350-09780
1654-160-20	4	16	20	L	FRONT PROP	196350-09400
1654-160-21	4	16	21	L	FRONT PROP	
1654-158-22	4	15 3/4	22	L	FRONT PROP	196350-09420
1654-158-23	4	15 3/4	23	L	FRONT PROP	
1654-155-24	4	15 1/2	24	L	FRONT PROP	196350-09440
1654-155-25	4	15 1/2	25	L	FRONT PROP	
1654-155-26	4	15 1/2	26	L	FRONT PROP	196350-09460
1654-150-27	4	15	27	L	FRONT PROP	
1654-150-28	4	15	28	L	FRONT PROP	196350-09480

E Standard Hub (Short Hub)

Drive Type SZ110, SZ111, SZ160, SZ161

AMITA 3 Aluminum 3 blade Rubber Hub

B	D	P	R	PART NO.
3	15.5	15	L	8712-150-15
3	14.8	17	L	8712-148-17
3	14.5	19	L	8712-145-19
3	14.3	21	L	8712-143-21

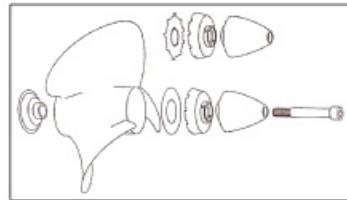
AMITA 3-E Plus Aluminum 3 blade Rubber Hub

B	D	P	R	PART NO.
3	15.8	15	L	8712-158-15
3	15.5	17	L	8712-155-17
3	15.3	19	L	8712-153-19
3	15.3	21	L	8712-153-21

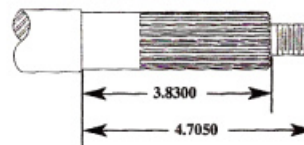
AMITA 4 Aluminum 4 blade Rubber Hub

B	D	P	R	PART NO.
4	14.75	15	L	8714-148-15
4	14.5	17	L	8714-145-17
4	14.25	19	L	8714-143-19
4	14	21	L	8714-140-21

Standard Hub Installation



Standard Shaft



E Long Hub

Drive Type SZ200, SZ251, SZ301

AMITA 3 Aluminum 3 blade Rubber Hub

B	D	P	R	PART NO.
3	15	15	L	8812-150-15
3	14.8	17	L	8812-148-17
3	14.5	19	L	8812-145-19
3	14.3	21	L	8812-143-21
3	14.2	23	L	8812-142-23

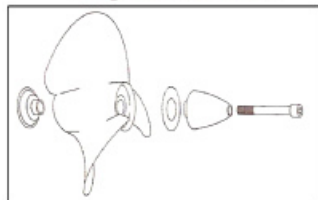
AMITA 3-E Plus Aluminum 3 blade Rubber Hub

B	D	P	R	PART NO.
3	15.8	15	L	8812-158-15
3	15.5	17	L	8812-155-17
3	15.3	19	L	8812-153-19
3	15.3	21	L	8812-153-21

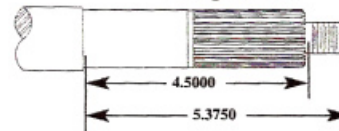
AMITA 4 Aluminum 4 blade Rubber Hub

B	D	P	R	PART NO.
4	14.75	15	L	8814-148-15
4	14.5	17	L	8814-145-17
4	14.25	19	L	8814-143-19
4	14	21	L	8814-140-21

Long Hub Installation



Long Shaft



	Thrust Washer (1/pack)	Spacer (1/pack)	Washer (2/pack)	Nut (1/pack)	Cotter Pin (4/pack)
E	Original YANMAR Part	Original YANMAR Part	Original YANMAR Part	Original YANMAR Part	Original YANMAR Part

Prop hardware for pressed in hub propeller.

