



FALCON 500 /L/S

F500/L/S Specifications

Length Overall (cm)	500
Width Overall (cm)	215
Height Overall (cm)	185
Tube Diameter (cm)	50
No. of Chambers	5
No. of Persons	9
Boat Weight (net) (kg)	185*
Maximum Payload (kg)	1100
Minimum Power (HP)	40
Recommended Power (HP)	50
Maximum Power (HP)	75
Design Category	C
Fuel Tank Capacity (L)	43

Dimensions do not include engine dimensions. Dimensions indicated have a tolerance of ±3%. Weight measurements have a tolerance of ±5%.

*F500L Boat Weight 233 kg
F500S Boat Weight 225 kg

Colours

Tube

Optional Extras

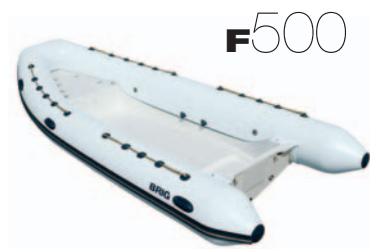
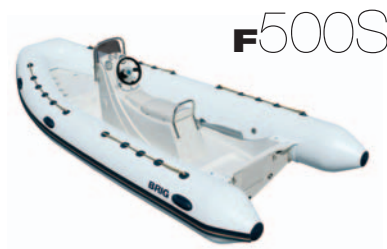
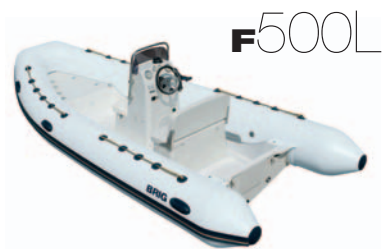
- Fuel tank
- Bow cushions
- Sundeck with cushions
- A-Frame with navigation lights
- Compass
- Overall cover
- Underseat bag*
- Lifting slings
- Steering console
- Seat with stowage*
- Steering system
- Bimini/suntop
- Hypalon ORCA® Fabric

*Only available on the F500 Open
†Not available on the F500S



The Falcon 500 is available in three models. The original 500 with open cockpit, the 500S with sports console and pillion seating and the 500L luxury model with armchair seating for the pilot. All the main design features of the F570 can be found in this more compact F500.

FALCONRIDERS



Standard Features

- | | | |
|---|---|---|
| <ul style="list-style-type: none"> Deep V rigid hull Anti-skid deck surface 2-sections bow stowage locker Twin self-bailing unit Tough raised rubbing strake | <ul style="list-style-type: none"> Oars and oar stowage 3 towing bow rings 4 built-in davit lifting points Carrying and safety handles Foot pump | <ul style="list-style-type: none"> Repair kit Accessories bag User's manual MIRASOL® PVC Fabric |
|---|---|---|

