



F450/L/S Specifications

Length Overall (cm)	445
Width Overall (cm)	195
Height Overall (cm)	175
Tube Diameter (cm)	50
No. of Chambers	4
No. of Persons	7
Boat Weight (net) (kg)	126*
Maximum Payload (kg)	900
Minimum Power (HP)	25
Recommended Power (HP)	40
Maximum Power (HP)	60
Design Category	C
Fuel Tank Capacity (L)	43

Dimensions do not include engine dimensions. Dimensions indicated have a tolerance of $\pm 3\%$. Weight measurements have a tolerance of $\pm 5\%$.

*F450L Boat Weight 174 kg
F450S Boat Weight 166 kg



The Falcon 450 is also available in three models. The original 450 with open cockpit, the 450S with sports console and pillion seating and the 450L luxury model with the armchair seating for the pilot.

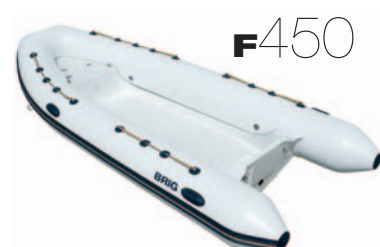
FALCONRIDERS



F450L



F450S



F450

Standard Features

- Deep V rigid hull
- Anti-skid deck surface
- Bow stowage locker
- One-way drain system
- Tough raised rubbing strake
- Oars and oar stowage
- 3 towing bow rings

- 4 built-in davit lifting points
- Carrying and safety handles
- Foot pump
- Repair kit
- Accessories bag
- User's manual
- MIRASOL® PVC Fabric



Colours

Tube

Optional Extras

- Fuel tank
- Bow cushions
- Sundeck with cushions
- A-Frame with navigation lights
- Compass
- Overall cover
- Underseat bag*
- Lifting slings
- Steering console
- Seat with stowage†
- Steering system
- Steering cable
- Bimini/suntop
- Hypalon ORCA® Fabric

*Only available on the F450 Open
†Not available on the F450S